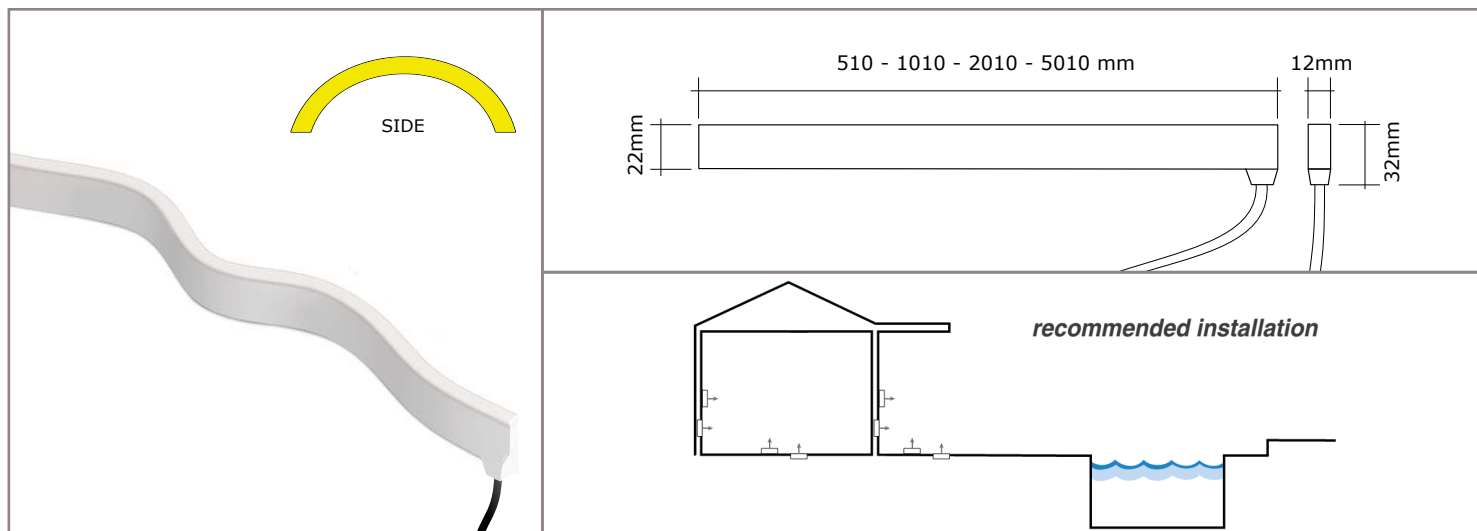


ALDABRA

PROFESSIONAL EXTERIOR LIGHTING

FLEXI side MONOCHROMATIC

DATA-SHEET



PRODUCT DESCRIPTION:

Professional flexible linear lighting for signal lighting suitable for indoor and outdoor settings. Body completely realized in flexible resin. UV resistance of all materials.

TECHNICALS FEATURES:

Materials	Resins
Power Supply	24 Vdc constant voltage
Power	10 W/m
Light Source	Mid Power LED
Pitch	8,3 mm
Colour Temperature	2700K ; 3000K ; 3500K ; 4500K
Lifetime	> 50000 h (TM21)
Optics	Opal diffuser 116°
Tc body	< 75 °C
Ta operating temperature	- 30 ÷ 50 °C
Ts surface temperature	≤ 65 °C
Ti suitable installation temperature	15 ÷ 40 °C
Storage temperature	-30 ÷ 85 °C
Functions	On/Off ; dimmable
Cable	AWM style 20233 2xAWG18 (Red;Black) L. 1 m.
Weigth	300 g/m
Installations	Recessed or surface (ground, wall)
Norms	60598-1 ; 60598-2 and its parts



IP68 1m/2h



NOTE:

Power supplies, control&dimming devices and fixing kits must to be orderd separately. Aldabra power supply consumption is equal to 15% of the fixture nominal power. Photometric data available at www.aldabra.it

Specifications are subject to change without notice.

www.aldabra.it

ALDABRA

PROFESSIONAL EXTERIOR LIGHTING

FLEXI side MONOCHROMATIC

DATA-SHEET

GENERAL FEATURES:

	power (W)	length (mm)	pitch (mm)
FLX.07.XXXXX.X	5	510 +/- 1,5 mm	8,3
FLX.08.XXXXX.X	10	1010 +/- 3 mm	8,3
FLX.09.XXXXX.X	20	2010 +/- 6 mm	8,3
FLX.12.XXXXX.X	50	5010 +/- 15 mm	8,3

OPTICAL FEATURES:

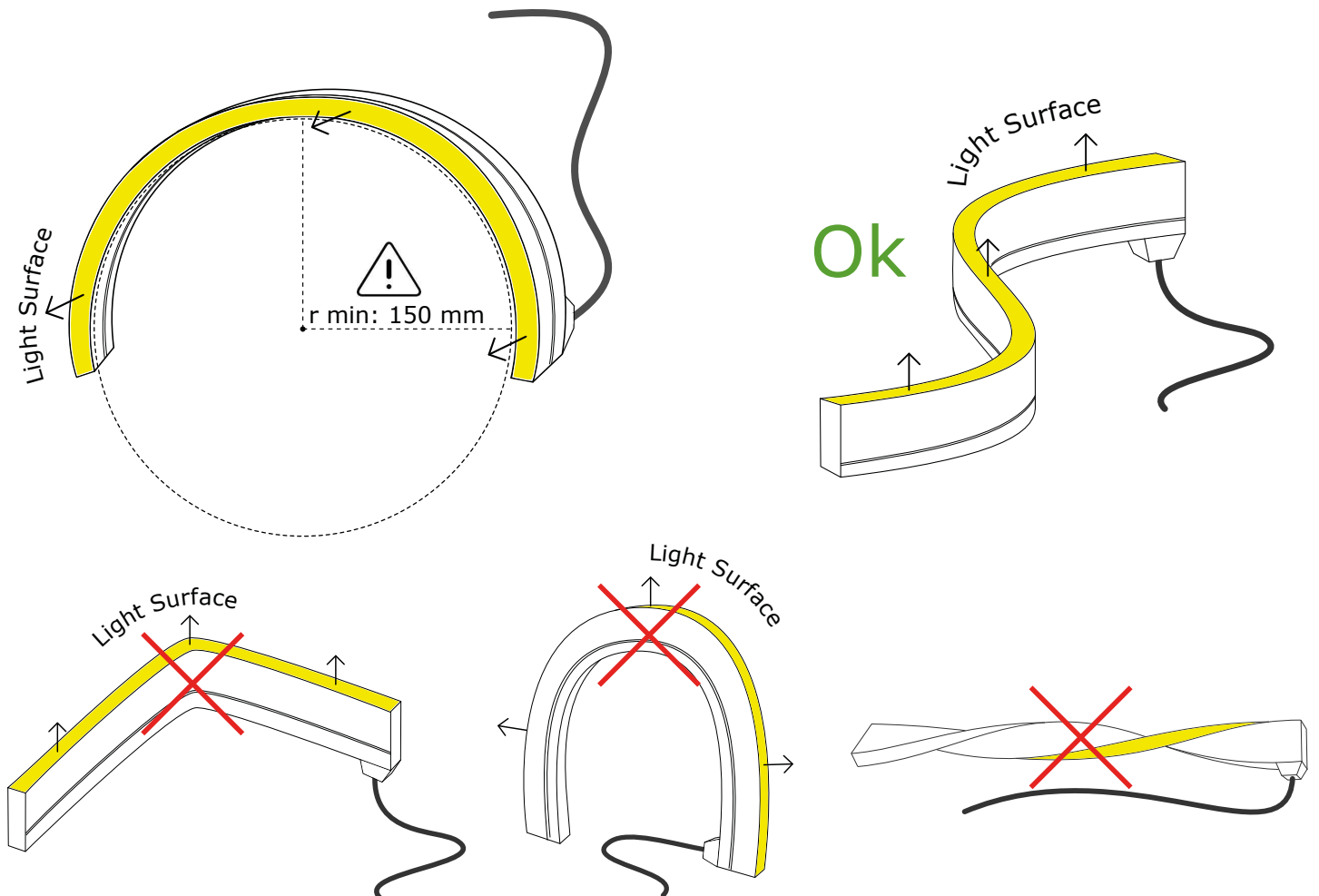
FLX.XX.DXXXX.X	Opal diffuser 116°
----------------	--------------------

LED FEATURES:

	Mid Power LED	lm/W	Ra	Chromatic selection
FLX.XX.X27XX.X	2700K warm white	90	>80	MacAdam 3-step
FLX.XX.X30XX.X	3000K warm white	92	>80	MacAdam 3-step
FLX.XX.X35XX.X	3500K neutral white	96	>80	MacAdam 3-step
FLX.XX.X45XX.X	4500K cool white	98	>80	MacAdam 3-step

FINISHES FEATURES:

FLX.XX.XXXW1.X	Matt white
----------------	------------



ALDABRA

PROFESSIONAL EXTERIOR LIGHTING

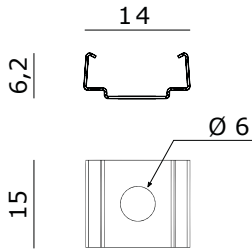
FLEXI side MONOCHROMATIC

DATA-SHEET

ACCESSORIES:

ACC.0189.0

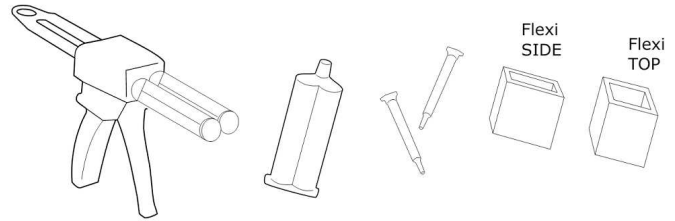
fixing spring for Flexi Side - 5 pieces package



ACC.0266.0

Sealing kit with gun

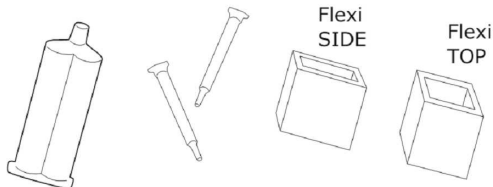
Including: a dispense gun, one cartridge of bi-component fast resin, two mixing spouts, two containing elements for resin



ACC.0267.0

Sealing kit with gun

Including: one cartridge of bi-component fast resin, two mixing spouts, two containing elements for resin



ACC.0275.0

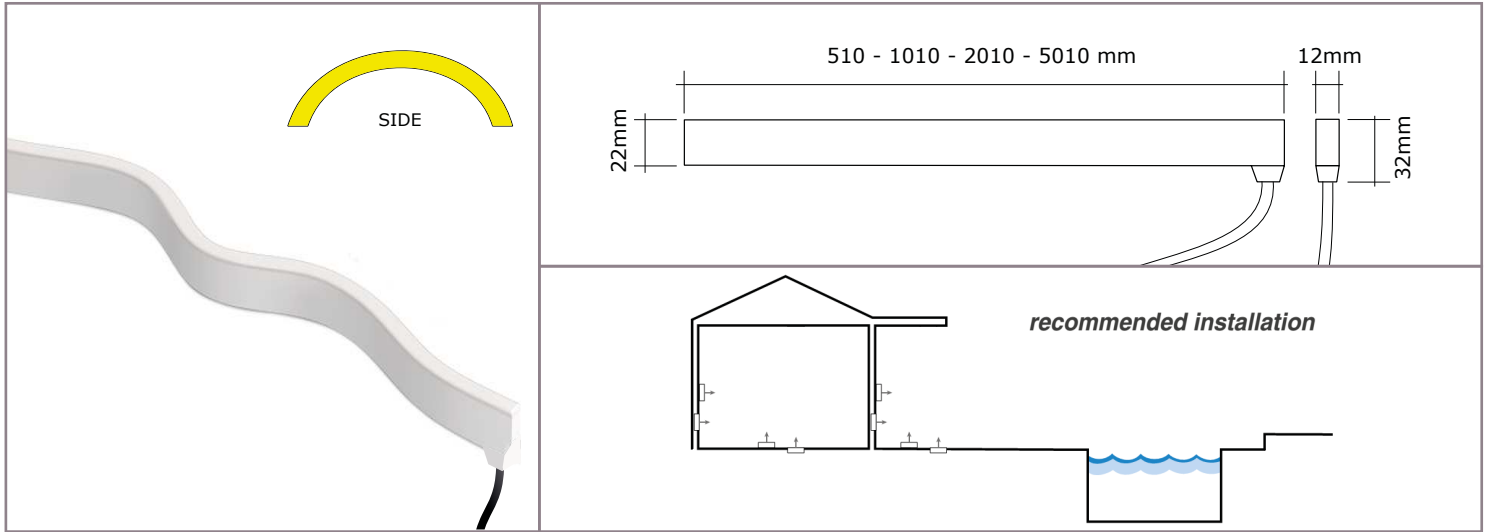
containing element for Flexi Side
5 pieces package



GENERAL INFORMATIONS:

Kindly note that atmospheric agents (such as lightnings, etc) , electrostatics charges or disturbances on the installation not caused by Aldabra lighting fixtures and Led drivers indicated by Aldabra itself, may cause damages on the fixtures. It is necessary that the electrical installation where the LED lighting fittings and their power supply units and control gears are installed must be equipped with proper devices for the protection and suppression of transient phenomena (SPD, isolation transformer, etc...). Such devices must to be coordinated with the other protections of the installation; on this theme, it's necessary to refer to the electrical installations norms which are in force in each country.

FLEXI side RGB DATA-SHEET



PRODUCT DESCRIPTION:

Professional flexible linear lighting for signal lighting suitable for indoor and outdoor settings. Body completely realized in flexible resin. UV resistance of all materials.

TECHNICALS FEATURES:

Materials	Resins
Power Supply	24 Vdc constant voltage
Power	18 W/m
Light Source	Signal LED
Pitch	8,3 mm
Dominant Wavelength	R=625nm, G=525nm, B=470nm
Lifetime	> 50000 h (L80B20)
Optics	Opal diffuser 116°
Tc body	< 75 °C
Ta operating temperature (on surface)	- 30 ÷ 50 °C
Ta operating temperature (recessed)	- 30 ÷ 40 °C
Ts surface temperature	≤ 65 °C
Ti suitable installation temperature	15 ÷ 40 °C
Storage temperature	-30 ÷ 85 °C
Functions	On/Off ; dimmable
Cable RGB	AWM style 20233 1xAWG18 (Red)+3xAWG20 (R/b, G/b, B/b) L. 1 m.
Weigth	300 g/m
Installations	Recessed or surface (ground, wall)
Norms	60598-1 ; 60598-2 and its parts



IP68 1m/2h



NOTE:

Power supplies, control&dimming devices and fixing kits must to be orderd separately. Aldabra power supply consumption is equal to 15% of the fixture nominal power. Photometric data available at www.aldabra.it

ALDABRA

PROFESSIONAL EXTERIOR LIGHTING

FLEXI side RGB

DATA-SHEET

GENERAL FEATURES:

	power (W)	length (mm)	pitch (mm)
FLX.07.XXXXX.X	9	510 +/- 1,5 mm	8,3
FLX.08.XXXXX.X	18	1010 +/- 3 mm	8,3
FLX.09.XXXXX.X	36	2010 +/- 6 mm	8,3
FLX.12.XXXXX.X	90	5010 +/- 15 mm	8,3

OPTICAL FEATURES:

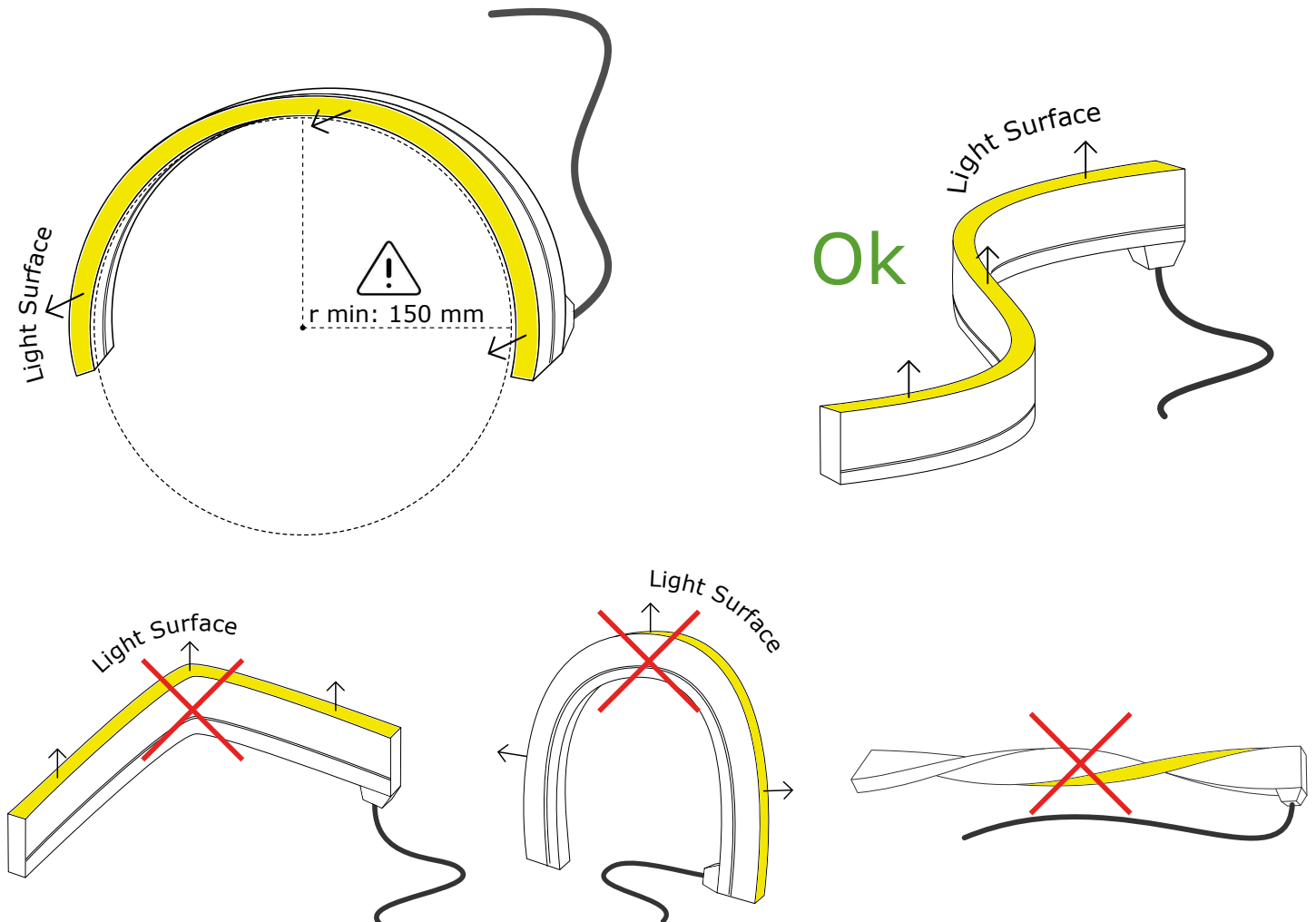
FLX.XX.DXXXX.X	Opal diffuser 116
----------------	-------------------

LED FEATURES:

	Signal LED
FLX.XX.X90XX.X	R, G, B

FINISHES FEATURES:

FLX.XX.XXXW1.X	Matt white
----------------	------------



ALDABRA

PROFESSIONAL EXTERIOR LIGHTING

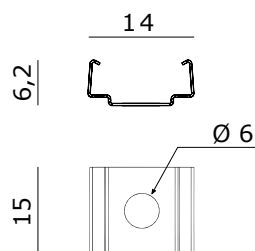
FLEXI side RGB

DATA-SHEET

ACCESSORIES:

ACC.0189.0

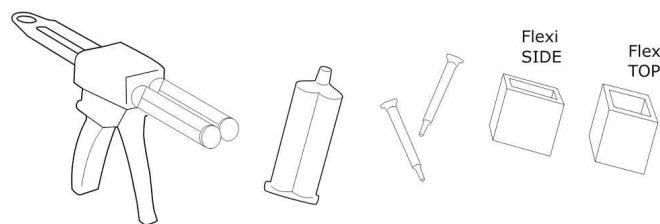
fixing spring for Flexi Side - 5 pieces package



ACC.0266.0

Sealing kit with gun

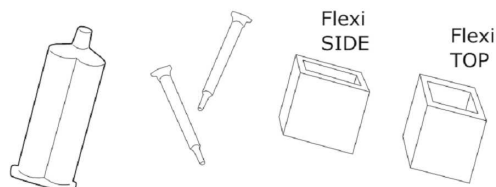
Including: a dispense gun, one cartridge of bi-component fast resin, two mixing spouts, two containing elements for resin



ACC.0267.0

Sealing kit with gun

Including: one cartridge of bi-component fast resin, two mixing spouts, two containing elements for resin



ACC.0275.0

containing element for Flexi Side
5 pieces package



GENERAL INFORMATIONS:

Kindly note that atmospheric agents (such as lightnings, etc) , electrostatics charges or disturbances on the installation not caused by Aldabra lighting fixtures and Led drivers indicated by Aldabra itself, may cause damages on the fixtures. It is necessary that the electrical installation where the LED lighting fittings and their power supply units and control gears are installed must be equipped with proper devices for the protection and suppression of transient phenomena (SPD, isolation transformer, etc...). Such devices must to be coordinated with the other protections of the installation; on this theme, it's necessary to refer to the electrical installations norms which are in force in each country.