

ECLIPS 30 Monochromatic

Power LED 350-500 mA

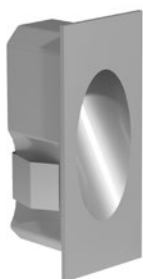
ALDABRA
LUCE CONTEMPORANEA

Submittal

Project: _____ Data: _____

Product Type: _____ Product Code: _____

Ordering Info: _____



Product Description

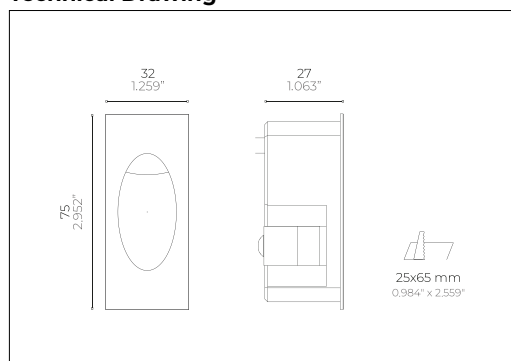
Recessed luminaire with asymmetric light beam for flood or step lighting. Suitable for indoor and outdoor applications. Available in three shapes: rectangular, square and circular. Made of painted aluminium and zinc alloy and UV-resistant nanopolymer resin that ensures a complete waterproofing.



Light Source

| | |
|----------------------------------|---------------------------|
| Light Source | Power LED LM 80 COMPLIANT |
| Colour Temperature ¹ | 2700K; 3000K; 4000K |
| Power | 1 - 1,5 W |
| Colour Rendering Index | > 90 |
| Chromatic Selection | Mac Adam 2-Step |
| Light Source Efficiency | lm/W |
| Fixture Luminous Flux | lm |
| Central Beam Candle Power (CBCP) | _____ |
| LED Type | _____ |

Technical Drawing



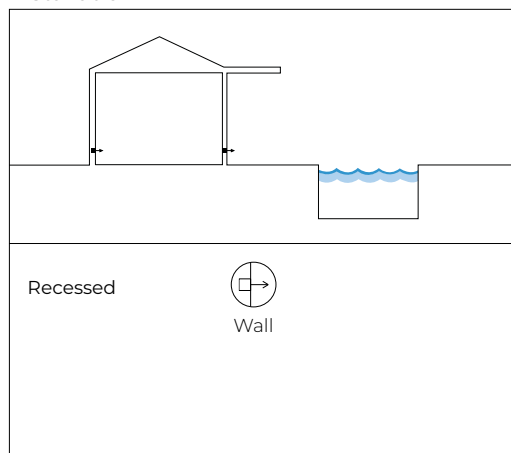
Power Supply

| | |
|-------------------------------|-----------------------------|
| Voltage | 350 - 500 mA |
| Dimming | PWM |
| Dimming Systems Compatibility | 0 - 10V; 1 - 10V; DALI; DMX |
| Driver | Remote |

Fixture

| | |
|----------------------------|--|
| Materials | Anticorodal Aluminium Alloy UNI 6060; Stainless Steel AISI 316L; Resin |
| Body Finishes ¹ | Painted (White; Aluminium; Titanium; Corten) |
| Weight | 110 g (0.242 lb) |
| Power Supply Cable | 0,5m (1,64ft) - 1xAWG20 (Red) + 1xAWG20 (Black) |
| Optics ¹ | Asymmetric 60° |
| Diffusers | _____ |
| Screens | _____ |

Installation



Temperature and Durability

| | |
|----------------------------------|-----------------------------------|
| LED Lifetime T _a 25°C | > 50000 h (TM21 L80 B10 @50000 h) |
| Fixture Lifetime | > 50000 h |
| T _a Performance | 25°C (77°F) |
| T _a Operative | -30 ÷ 50 °C (-22 ÷ 122 °F) |
| Body Temperature | < 90 °C (194 °F) |
| Surface Temperature | ≤ 65 °C (149 °F) |

Installation

| | |
|-----------------------------|---|
| Electrical Insulation Class | III |
| IP Protection Degrees | IP65/IP67 |
| Impact Resistance | IK06 |
| Driveability | _____ |
| Walkability | _____ |
| Certifications | CE; UL listed |
| Normative | EN60598-1; EN60598-2 and its parts; UL 676; CSA C22.2 No. 89-15; UL 2108; UL 1598/C250-08 |

¹ Note: contact the factory for custom CCT, optics, finishes and lengths



650°C

AQA
STOP FLEX

A A+ A++

Note:

- Power supplies, control&dimming devices and fixing kits must be ordered separately. - Aldabra power supply consumption is equal to 15% of the fixture nominal power.
- Specifications are subject to change without notice. - Photometric data available at www.aldabra.it - Aldabra, all rights reserved.

www.aldabra.it

ECLIPS 30 Monochromatic

Power LED 350-500 mA

ALDABRA
L U C E C O N T E M P O R A N E A

Part Number

example: **ECL.01.A30W1.0**



Dimensions & Power ¹

- ☐ **ECL.01** 32 x 75 x 27 mm - 1 - 1,5 W
1.259" x 2.952" x 1.063" - 1 - 1,5 W

Optical Features ¹

- ☐ **A** Asymmetric Optic

CCT ¹

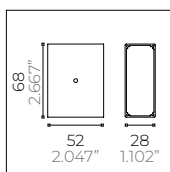
- ☐ **27** 2700K
☐ **30** 3000K
☐ **40** 4000K

Finishes ¹

- ☐ **G1.0** Painted Aluminium
☐ **W1.0** Painted Matt White
☐ **Z1.0** Painted Titanium
☐ **C1.0** Painted Corten

Notes: _____

Recessing Box

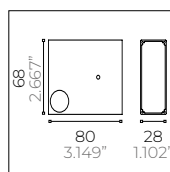


Type A

Steel Recessing Box for Plasterboard



- ☐ **CSF.0016.1** 52 x 28 x 68 mm
2.047" x 1.102" x 2.667"



Type B

Steel Recessing Box for Plasterboard



- ☐ **CSF.0017.1** 80 x 28 x 68 mm
3.149" x 1.102" x 2.667"

Generic Accessories



- ☐ **ACC.0005.0**
IP68 Waterproof connection
box with gel
4 channels - 3 poles

General Informations:

Kindly note that atmospheric agents (such as lightnings, etc), electrostatics charges or disturbances on the installation not caused by Aldabra lighting fixtures and Led drivers indicated by Aldabra itself, may cause damages on the fixtures. It is necessary that the electrical installation where the LED lighting fittings and their power supply units and control gears are installed must be equipped with proper devices for the protection and suppression of transient phenomena (SPD, isolation transformer, etc...). Such devices must to be coordinated with the other protections of the installation; on this theme, it's necessary to refer to the electrical installations norms which are in force in each country.